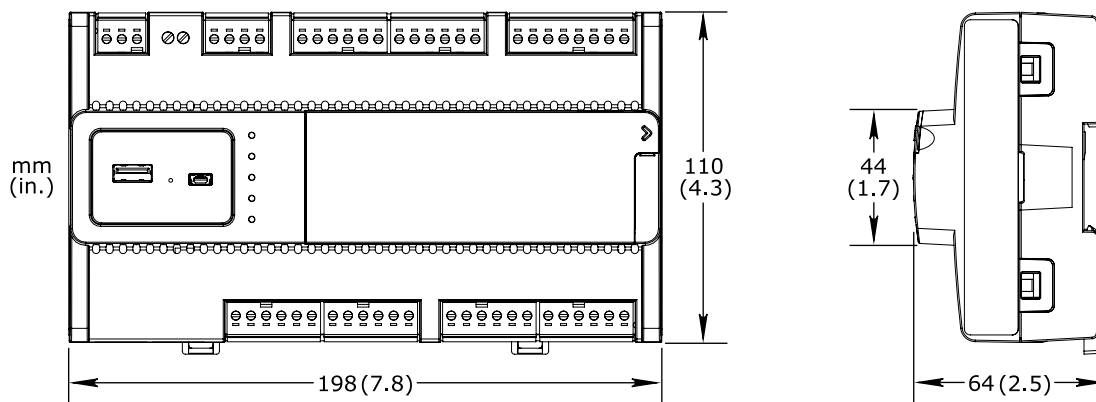
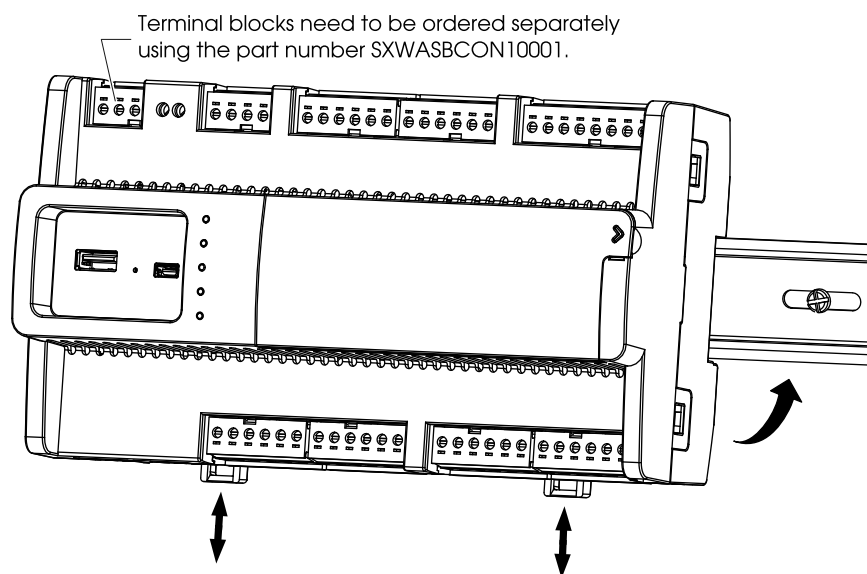


## SmartX Controller – AS-B

### Dimensions

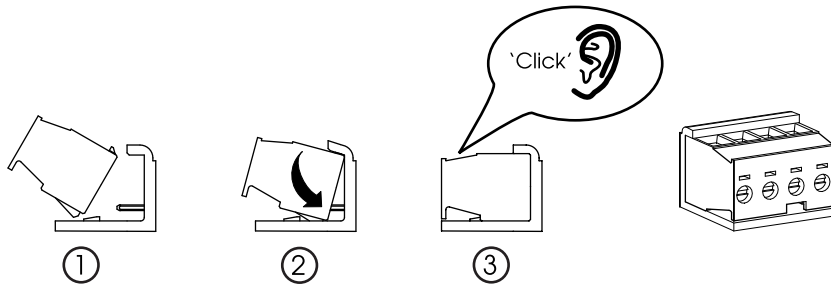


### Installing the Device



Warning: Install the device on a horizontal DIN rail. This position provides sufficient cooling air flow through the device. Installation on a vertical DIN rail can reduce the life span of the module.

## Installing a Terminal Block

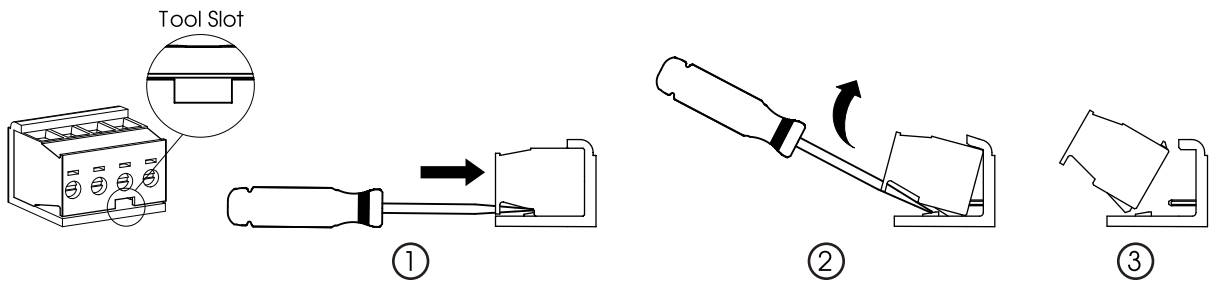


Caution: Do not push the terminal block straight down into the connector header. This may cause the back wall of the header to crack.

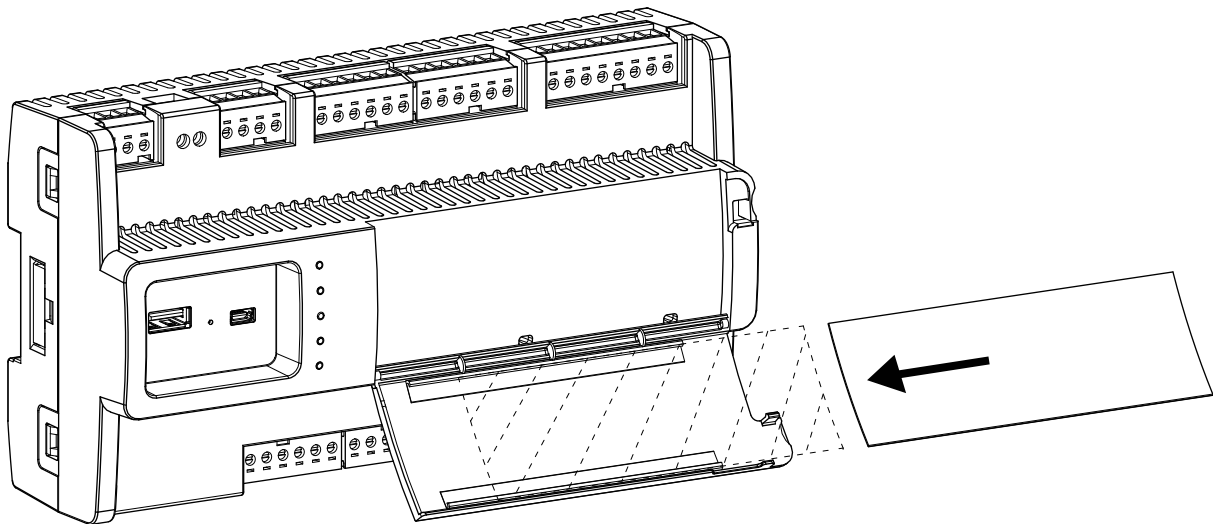


Caution: Use only terminal blocks ordered from Schneider Electric using the part number SXWASBCON10001.

## Removing a Terminal Block



## Labeling the Device

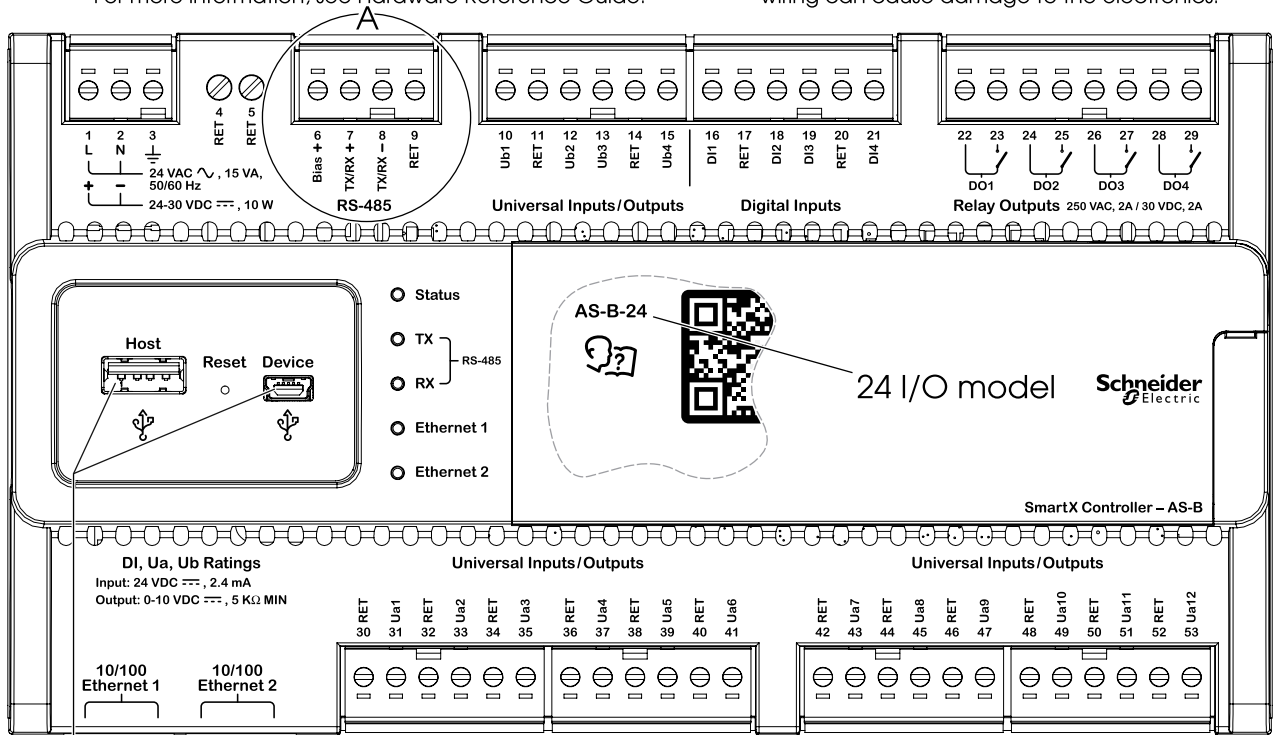




Warning: Properly ground AS-B and correctly wire the RS-485 network. Correct grounding and wiring is important for safety, performance, and reliability. For more information, see Hardware Reference Guide.

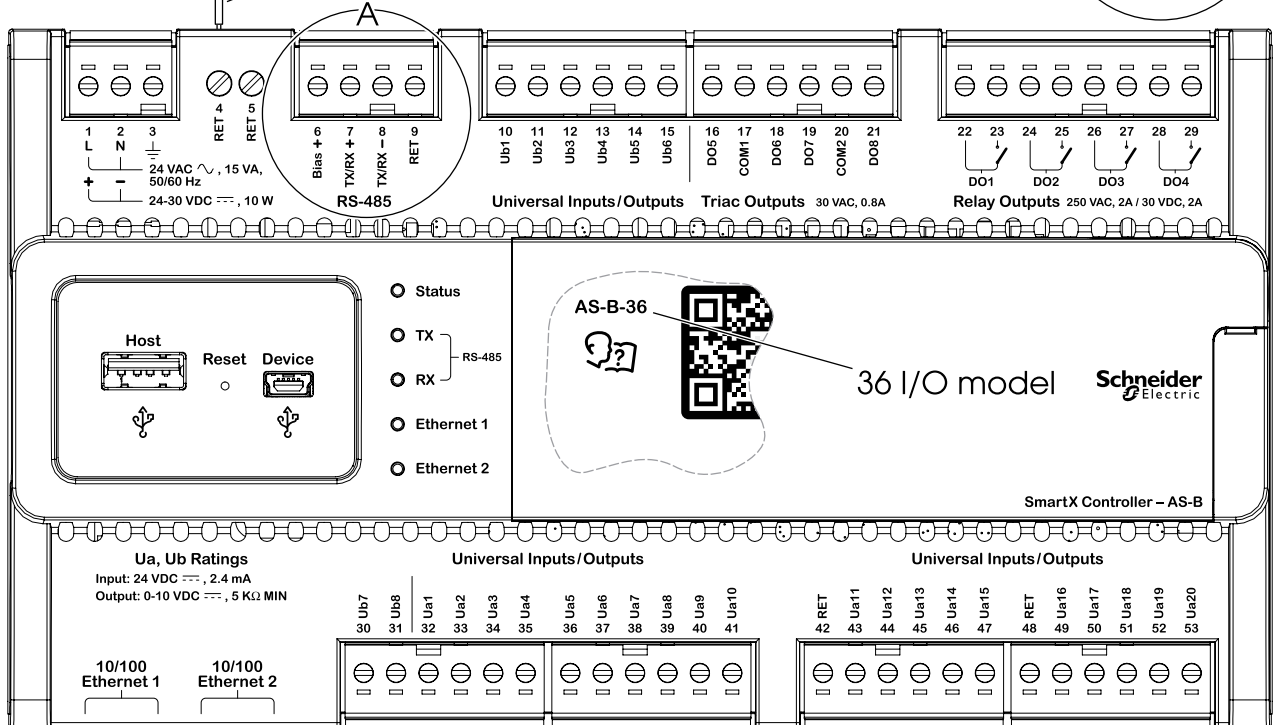
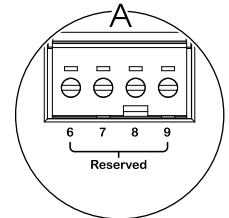
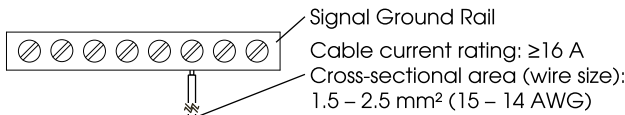


Warning: Ensure you install and wire the correct AS-B model and plug the correct terminal block into the intended connector header. Incorrect wiring can cause damage to the electronics.



The connection cable for the USB ports must not exceed 3 m (10 ft).

Note the differences for AS-Bs with "L" in the product name:  
 A: The RS-485 port is not used and terminals 6 to 9 must not be connected.



## Part Numbers

Product	Part number
AS-B-24	SXWASB24X10001
AS-B-24H	SXWASB24H10001
AS-B-24L	SXWASB24X10002
AS-B-24HL	SXWASB24H10002
AS-B-36	SXWASB36X10001
AS-B-36H	SXWASB36H10001
AS-B-36L	SXWASB36X10002
AS-B-36HL	SXWASB36H10002
AS-B connector kit	SXWASBCON10001
AS-B installer kit	SXWASBINS10001

### Note:

- “H” in the product name indicates that AS-B is equipped with an override display.
- “L” in the product name indicates that AS-B does not support Modbus, BACnet MS/TP, or hosting of BACnet/IP devices. The RS-485 port is not used.

## AS-B Software

AS-B is delivered without software. Install the software on AS-B using Device Administrator.

## Software License Notice

This product contains code that is covered by the GNU General Public License (GPL). The relevant code is available at The Exchange Extranet, <https://ecobuilding.schneider-electric.com>

## Specifications

### AC input

#### Nominal voltage

24 VAC ~ 50/60 Hz

#### Recommended transformer rating

≥15 VA

### DC input

#### Nominal voltage

24 to 30 VDC ---

#### Power consumption

10 W

### Port types

#### USB device port

Mini-B

#### USB host port

Type-A

#### Ethernet port 1 and 2

10/100BASE-TX RJ45

### Operation environment

#### Ambient temperature, operating

0 to 50 °C (32 to 122 °F)

#### Humidity

Maximum 95 % RH non-condensing

### Mechanical

#### Enclosure rating

IP 20

### Plastic rating

UL94-5VB

### Electrical

#### Default (static) IP address

192.168.1.99

### Regulatory compliance

#### EMC, safety, and environment

FCC CFR 47 Part 15 Class B, ICES-003 Class B, RCM, CE - EMCD 2014/30/EU, CE - LVD 2014/35/EU, WEEE 2012/19/EU, RoHS 2011/65/EU, China RoHS SJ/T 11364-2014, UL 916 Listed products for the United States and Canada, Open Class Energy Management Equipment (UL file E80146.)

### Ua – Universal I/O

#### Input rating

24 VDC ---, 2.4 mA

#### Output rating

0 to 10 VDC ---, 5 kohm (min.)

#### Channels

12 input/output (AS-B with 24 I/O points)

20 input/output (AS-B with 36 I/O points)

### Ub – Universal I/O

#### Input rating

24 VDC ---, 2.4 mA

#### Output rating

0 to 10 VDC ---, 5 kohm (min.)

#### Channels

4 input/output (AS-B with 24 I/O points)

8 input/output (AS-B with 36 I/O points)

### DO – Relay outputs

#### Relay contact rating

250 VAC ~ / 30 VDC ---, 2 A

Pilot Duty (C300)

#### Channels

4 output

### DO – Triac outputs

#### Triac rating

Max. 30 VAC ~, 0.8 A

#### Channels

4 output (AS-B with 36 I/O points)

### DI – Digital inputs

#### Input rating

24 VDC ---, 2.4 mA

#### Channels

4 input (AS-B with 24 I/O points)

部件名称 (Part Name)	有害物质 (Hazardous Substances)					
	铅 (Pb)	汞 (Hg)	镉 (Cd)	六价铬 (Cr (VI))	多溴联苯 (PBB)	多溴二苯醚 (PBDE)
塑料部件 (Plastic Parts)	○	○	○	○	○	○
电子件 (Electronics)	X	○	○	○	○	○

本表格依据 SJ/T11364 的规定编制。(This table is made according to SJ/T 11364.)

○: 表示该有害物质在该部件所有均质材料中的含量均在 GB/T 26572 规定的限量要求以下。

(Indicates that the concentration of hazardous substance in all of the homogeneous materials for this part is below the limit as stipulated in GB/T 26572.)

X: 表示该有害物质至少在该部件的某一均质材料中的含量超出 GB/T 26572 规定的限量要求。

(Indicates that the concentration of hazardous substance in at least one of the homogeneous materials used for this part is above the limit as stipulated in GB/T 26572.)

